

BEEKEEPING

THINGS TO REMEMBER FOR
PRODUCING SAFE AND
HIGH QUALITY HONEY

ALWAYS REMEMBER!

1

MISDIAGNOSIS AND IMPROPER TREATMENT DO MORE HARM TO BEES THAN THE DISEASE ITSELF!

2

USE OF ANTIBIOTICS FOR PREVENTIVE TREATMENT ONLY HARMS THE HEALTH OF BEES AND CAUSE HONEY CONTAMINATION!

3

ANY ACTION CONDUCTED BY THE BEEKEEPER (BEE TREATMENT, FEEDING) INFLUENCES THE QUALITY AND SAFETY OF BEESWAX!

4

AMERICAN FOULBROOD CANNOT BE TREATED WITH ANTIBIOTICS!

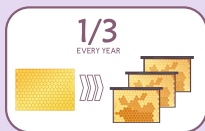
5

SELLING OF CONTAMINATED HONEY IS PROHIBITED!

8 THINGS TO REMEMBER ABOUT BEESWAX

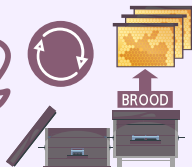


1



REPLACE ONE THIRD OF BEESWAX
FOUNDATION ANNUALLY

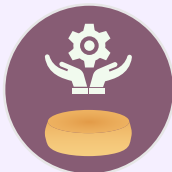
2



IT IS RECOMMENDED
TO REPLACE BROOD
CHAMBERS WITH NEW
ONES EVERY OTHER
YEAR

3

IT IS DESIRABLE TO USE OWN
PRODUCED BEESWAX



4



MELT WAX AT MAXIMUM 75-80 DEGREES TO
MAINTAIN ITS QUALITY AND STRUCTURE

5

IT IS BETTER TO MELT WAX
NATURALLY THROUGH A
SOLAR WAX MELTER



6



STORE WAX AND CAP SEPARATELY, IN THE
SPECIAL CONTAINERS

7



REMEMBER THAT ANTIBIOTICS RESIDUES IN BEESWAX
ARE EASILY TRANSFERRED TO HONEY AND
DETECTED IN LABORATORY ANALYSIS OF HONEY

8



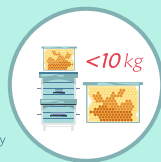
BEESWAX CONTAMINATED BY ANTIBIOTICS SHOULD BE
FULLY REPLACED

10 THINGS TO REMEMBER ABOUT FEEDING BEES

1

ARTIFICIAL FEED IS USED
ONLY IN THE CASE OF LACK
OF FEED SUPPLY OR LOW
HONEY FLOW

(when there is less than 10 kg of supply
in the hive)



2



OPTIMAL DOSAGE

CONTROL OF ARTIFICIAL FEED DOSAGE IS
IMPORTANT TO PREVENT HIGH SUGAR CONTENT IN
HONEY

3



DO NOT PUT ANTIBIOTICS IN ARTIFICIAL FEED, AS
ANTIBIOTICS EASILY TRANSFER TO HONEY

4



DO NOT BUY ARTIFICIAL FEED
CONTAINING ANTIBIOTICS. ASK A
SELLER FOR ANTIBIOTICS FREE
ARTIFICIAL FEED

5



DO NOT PUT YEAST IN CANDY
(ARTIFICIAL FEED)

6

2 WEEKS BEFORE



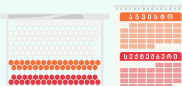
STOP ARTIFICIAL FEEDING TWO
WEEKS BEFORE HONEY FLOW
STARTS

7



IT IS NOT ALLOWED TO USE
INVERTED SUGAR OR SUGAR SYRUP
DURING HONEY FLOW

8



IN THE CASE OF A LACK OF STORED
HONEY FOR BEES TO FEED, GIVE
ADDITIONAL FEED IN AUGUST-
SEPTEMBER WHEN COLONY IS STRONG

9



WHILE REPLACING HONEY
FRAMES USE ONLY HEALTHY
COLONY FRAMES

10



AVOID EXTRACTING &
SELLING HONEY FROM THE
BROOD CHAMBER BECAUSE
OF ITS LOW QUALITY AND A
HIGH RISK OF
CONTAMINATION

9 THINGS TO REMEMBER

BEFORE BEE TREATMENT

1

PERFORM REGULAR
HEALTH CHECKS OF
BEE COLONIES

In the case of suspicious signs, apply to
the **Georgian Beekeepers Union** for
correct diagnosis and consultation



2



FOR BEEKEEPING

BUY VETERINARY DRUGS MADE
ESPECIALLY FOR BEEKEEPING AND
TREATING BEES

3



ONLY BUY THESE DRUGS AT A VET PHARMACY OR
BEEKEEPING SHOPS

4



DO NOT BUY ANTIBIOTICS OR OTHER
MEDICINES IN ORDINARY PHARMACIES
FOR THE TREATMENT OF DISEASE IN
APIARIES

5



WHILE BUYING MEDICINES, CAREFULLY READ
THE INGREDIENTS, EXPIRATION DATE AND
INSTRUCTIONS FOR USING THE MEDICINE

6



OPEN THE MEDICINE JUST
BEFORE USE

7



CAREFULLY FOLLOW
INSTRUCTIONS FOR
USE: DOSEAGE,
FREQUENCY & TIMING

8



FOLLOW ANY SAFETY INSTRUCTIONS WHILE USING THE MEDICINES
(e.g. protective clothing, rubber gloves, respirator and goggles)

9



DO NOT BUY A
MEDICINE, which:

Is made for humans,
animals or poultry



Is unlabeled, unreadable or
does not provide full
information about its
ingredients



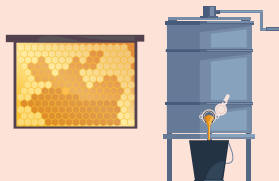
Contain prohibited
antibiotics
(see the list)



Is of unknown
origin

6 THINGS TO REMEMBER

ABOUT HONEY EXTRACTION & STORAGE



1



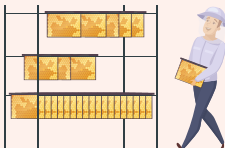
DO NOT EXTRACT HONEY FROM BROOD FRAMES BECAUSE OF ITS LOW QUALITY

2



DO NOT EXTRACT UNRIPE HONEY BECAUSE OF ITS HIGH-WATER CONTENT, ACIDITY, AND OTHER FACTORS LOWERING HONEY QUALITY

3



PLACE REMOVED HONEY FRAMES IN A CLEAN AND SAFE PLACE

4



DO NOT USE ALUMINUM OR ZINC CONTAINERS FOR HONEY STORAGE. USE STAINLESS STEEL, PLASTIC OR OTHER CONTAINERS DESIGNED FOR FOOD STORAGE

5

HONEY SHOULD BE STORED IN AN AIRTIGHT FOOD CONTAINER IN A COOL AND DRY PLACE, PROTECTED FROM SUN

(at an optimum temperature of 10 C° and humidity of 66%)



<10°C

<66%RH

6



IF HONEY CANNOT BE STORED PROPERLY IT IS RECOMMENDED TO SELL IT WITHIN A MONTH AFTER ITS EXTRACTION

LIST OF ANTIBIOTICS

(MOST USED SUBSTANCES IN GEORGIA)

CHLORAMPHENICOL	NOT ALLOWED
NITROMIDAZOLE GROUP: <ul style="list-style-type: none">• METRONIDAZOLE• DIMETRIDAZOLE• RONIDAZOLE	
NITROFURANS (FURAZOLIDONE) GROUP	
SULFONAMIDES GROUP <ul style="list-style-type: none">• SULFATHIAZOLE• TRIMETHOPRIM• OTHER	
STREPTOMYCIN	
PENICILLIN	
ERYTHROMYCIN	
TETRACYCLINES GROUP	

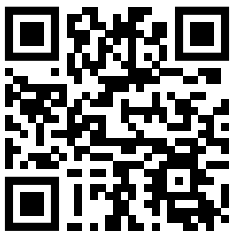
LIST OF PESTICIDES

(MOST USED SUBSTANCES IN GEORGIA)

COUMAPHOS (PERIZIN)	LIMITED
AMITRAZ	LIMITED
FLUMETHRIN	ALLOWED
TAU-FLUVALINATE	ALLOWED
OXALIC ACID	ALLOWED



GEORGIAN BEEKEEPERS UNION



www.geobeekeepers.ge

geobeekeepers@gmail.com

+995 599 998 798